



SOCIAL DISTANCING GUIDELINES

Firebird Raceway has developed a comprehensive program to reduce exposure to COVID-19 and to manage the health and well-being of its employees, participants, crew members and attendees. In accordance with the State of Idaho health and safety guidelines, Firebird Raceway has established the following initiatives:

Firebird Raceway fully supports and encourages all team members to be as proactive with hand washing, hand sanitizers and facial coverings as possible.

PARTICIPANTS & ATTENDEES

1 Firebird Raceway offers online ticketing in an effort to limit physical interaction between customers and the Firebird staff. This includes advance registration sales and in-car ticket purchasing (no ticket windows/line).

2 Firebird has contracted additional security and customer service representatives to help encourage social distancing guidelines throughout the facility.

3 Firebird Raceway will make available multiple ways to enhance ingress and egress into and out of the facility, working towardso safely manage traffic flow.

4 Firebird Raceway has installed mobile hand sanitizing stations and will have dedicated employees to monitor, clean and stock these stations throughout each event. Additionally, employees will be cleaning and sanitizing high traffic areas on an increased schedule.

5 Firebird Raceway has installed signage and visual markers to designate social distancing for spectator viewing areas, restrooms and its food and beverage stands.

6 Access to the Race Control Tower will be restricted and limited to essential Firebird staff only.

Participants & Attendees continued on next page...



SOCIAL DISTANCING GUIDELINES

Participants & Attendees continued...

7

Firebird encourages you to do your part by staying home if you are sick or do not feel well.

8

The process of payouts for events will not take place on-site or in the Race Control Tower on the day of the event. Firebird will mail prize checks to the race winners.

9

The staging lanes/starting line are the main congregating areas for racers, crew members and their families. We will be implementing policies and procedures for this area that provide limited access to crew members, including limited time in the area. Our security staff, starting line crew and Firebird Safety Team staff will closely monitor this area to prevent unauthorized gathering.

10

Firebird staff will request that all patrons space out in the grandstands for physical distancing. i.e. - Members of the same household may sit together in a group, to allow an appropriate buffer between seats.

11

As a proactive measure, Firebird encourages attendees not to congregate or gather in larger groups during or following the conclusion of a race day. Compliance of social distancing measures must be adhered to at all times.

12

Ada County now strongly encourages the use of Face Coverings when physical distancing of 6 feet cannot be maintained.

RACER & CREW GUIDELINES

1

When parking in the pit area, please leave a minimum of 6' between race cars and/or transports-trailers.

2

Please adhere to social distancing guidelines and refrain from gathering in large groups with people outside of your family or team.

3

Firebird Raceway has installed mobile hand sanitizing stations and will have employees monitoring, cleaning and stocking these stations

throughout the event. Additionally, employees will increase inspection and cleaning of high traffic areas (i.e. restrooms).

4

Crews must leave the starting line as soon as its team vehicle completes its pass.

5

NO CONGREGATING ON STARTING LINE WILL BE PERMITTED.

Racer & Crew continued on next page...



SOCIAL DISTANCING GUIDELINES

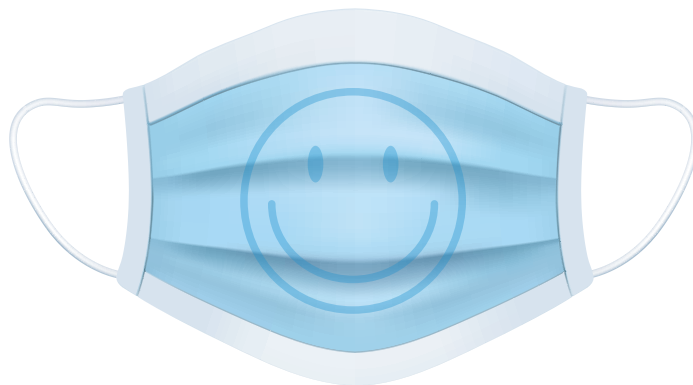
Racer & Crew continued...

6 Access to the Race Control Tower is restricted and limited to only essential Firebird staff.

7 With the importance of physical distancing, we will not offer a post-race group winner's circle presentation (photo) at this time. Instead, an individual photo will be taken at the end of the event of the champion and award.

8 The process of payouts WILL NOT take place on-site (in Sport Shop or tower on the day of the event). We will be mailing checks after the race. Unless on file, a W-9 for the racer will be required before a check will be issued (for payouts greater than \$600). When filing out the W-9 it must be legible and can be emailed to race@firebirdonline.com. Link to W-9 (first page): <https://www.irs.gov/pub/irs-pdf/fw9.pdf>

PER ADA COUNTY, FIREBIRD'S FACE COVERING POLICY IS AS FOLLOWS FOR EVENTS IN 2021



In compliance with Ada County, we strongly recommend the use of face covering when social distancing of 6' or greater cannot be achieved

- Face coverings are strongly encouraged during our racing events. In the safety inspection/tech line, food and beverage line, and Sport Shop souvenir stores and restrooms we respectfully require use of face coverings.
- Face coverings will not be required where social distancing of 6-feet is achievable.
- Masks can be purchased at our souvenir store during events.
- Face covering requirements do not apply to (a) children under the age of two; (b) persons with medical conditions, mental health conditions, or a disability that prevents them from wearing a face covering; (c) persons who are deaf and hard of hearing, or communicating with a person who is deaf and hard of hearing, where the ability to see the mouth is essential for communication; and (d) persons who are eating or drinking while engaging in social distancing.