

# SOCIAL DISTANCING GUIDELINES



The Boise Roadster Show has developed a comprehensive plan to reduce exposure to COVID-19 and to manage the health and well-being of its employees, participants, vendors and attendees. In accordance with the State of Idaho health and safety guidelines, the Roadster Show will be establishing the following additional initiatives:

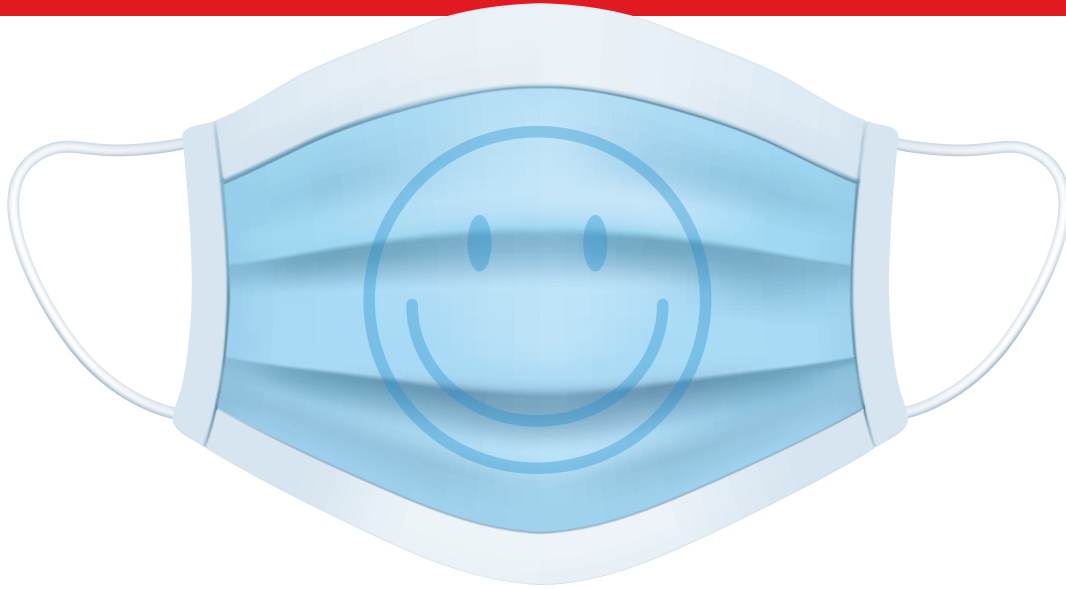
The Boise Roadster Show will be proactive to ensure compliance with social distancing, hand washing, and face covering requirements as outlined below.

## PARTICIPANTS, VENDORS & ATTENDEES

- 1** The Roadster Show will institute ticket selling procedures that will limit physical interaction between customers and the show ticket staff including advance online registration and ticket sales, encouraging a minimum of 6' distancing at the Expo Idaho entrance gates.
- 2** Additional customer service representatives will be in place to encourage social distancing practices during the event.
- 3** When deemed necessary, the Roadster Show will open multiple entrances and exits and will adjust in real time to maximize the ingress and egress to safely manage traffic flow.
- 4** The Roadster Show will make available mobile hand sanitizing stations and will have dedicated employees to monitor, clean and stock these stations throughout the event. Additionally, employees will be cleaning and sanitizing high traffic areas on an increased schedule.
- 5** The Expo will have signage and visual markers to designate social distancing for attendees, restrooms and at its food and beverage operation.
- 6** Access to the Show Office will be restricted and limited to essential Roadster Show staff and judges only.
- 7** The Roadster Show encourages you to do your part by staying home if you are sick, do not feel well or are experiencing any symptoms (i.e. fever, cough).
- 8** As a proactive measure, the Roadster Show encourages attendees not to congregate or gather in larger groups during or following the conclusion of an event day. Compliance of social distancing measures must be adhered to at all times.
- 9** With the importance placed on social/physical distancing, Sunday's normal awards program will look different this March. On Sun. afternoon, we plan to hand deliver awards to all exhibitors at their display.
- 10** The process of payouts will not take place on-site (at the Expo). We will be mailing checks after the event. Unless on file, a W-9 will be required before a check will be issued (for payouts greater than \$600). When filling out the W-9 it must be legible and can be emailed to [race@firebirdonline.com](mailto:race@firebirdonline.com). Link to W-9 (first page): <https://www.irs.gov/pub/irs-pdf/fw9.pdf>



# SOCIAL DISTANCING GUIDELINES



## PER ADA COUNTY MANDATE, THE ROADSTER SHOW RELEASES FACE COVERING POLICY FOR ATTENDEES

***In order to keep our guests safe and to comply with the Ada County order, the Roadster Show has implemented policies to require face coverings at the 2021 event.***

- Face coverings are REQUIRED during exhibitor move-in (Thursday), during show hours (Friday-Sunday) and exhibitor move out (Sunday evening).
- Masks may be purchased at our Roadster Show souvenir store.
- Face covering requirements do not apply to (a) children under the age of two; (b) persons with medical conditions, mental health conditions, or a disability that prevents them from wearing a face covering; (c) persons who are deaf and hard of hearing, or communicating with a person who is deaf and hard of hearing, where the ability to see the mouth is essential for communication; and (d) persons who are eating or drinking while engaging in social distancing.

